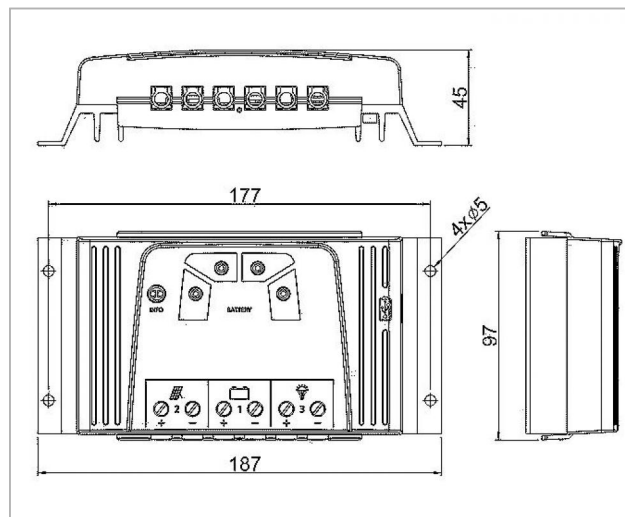


Steca Solsum 2525 | 4040

The Steca Solsum 2525 and 4040 solar charge controllers are a further development of our globally popular Solarix PRS controller family. Thanks to the increased module and load current, they are now also suitable for even larger systems. The units also have an integrated USB charging socket that can be used to charge smartphones and tablets. They offer impressive simplicity, performance and an unbeatable price-performance ratio.

Multiple LEDs in different colours provide information about the battery's state of charge at a glance. Modern Steca algorithms are used to ensure optimal battery maintenance. The Steca Solsum charge controllers are equipped with an electronic fuse, offering ideal protection. They work according to the serial principle and separate the solar module from the battery to protect against overcharging.

For larger projects, charge controllers can also be equipped with special functions, e.g. a night light function and selectable charge termination and deep discharge protection voltages.



Product features

- Serial topology with MOSFETs
- Automatic detection of voltage
- Voltage regulation
- PWM control
- Multistage charging technology
- Current compensated load disconnection
- Automatic load reconnection
- Temperature compensation
- Negative earthing of one or positive earthing of several terminals possible
- Monthly equalisation charge
- USB charge socket for smartphones and tablets

Electronic protection functions

- Overcharge protection
- Deep discharge protection
- Reverse polarity protection of module (≤ 36 V), load and battery
- Automatic electronic fuse
- Short circuit protection of load and module
- Overvoltage protection at module input
- Open circuit protection without battery
- Reverse current protection at night
- Overtemperature and overload protection
- Load disconnection on battery overvoltage

Displays

- Multifunction LED display
- Multi-coloured LED
- 4 LEDs show operating states
- for operation, state of charge, fault messages

Options

- Evening or night light function pre-set in the factory or adjustable via Steca PA RC 100
- Parameterisation of function values via Steca PA RC 100

Certificates

- Compliant with European Standards (CE)
- RoHS compliant
- Made in EU
- Manufactured according to ISO 9001 and ISO 14001

Accessories

- Steca PA RC100

| | 2525 | 4040 |
|--|---|------|
| Characterisation of the operating performance | | |
| System voltage | 12 V (24 V) | |
| Own consumption | < 10,5 mA | |
| DC input side | | |
| Open circuit voltage solar module (at minimum operating temperature) | < 47 V | |
| Module current | 25 A | 40 A |
| DC output side | | |
| Load current | 25 A | 40 A |
| USB charge socket | 5.2 V / 1.5 A | |
| Reconnection voltage (LVR) | 12.4 V ... 12.7 V (24.8 V ... 25.4 V) | |
| Deep discharge protection (LVD) | 11.2 V ... 11.6 V (22.4 V ... 23.2 V) | |
| Battery side | | |
| Battery voltage | 9 V ... 17 V (17.1 V ... 34 V) | |
| End-of-charge voltage | 13.9 V (27.8 V) | |
| Boost charge voltage | 14.4 V (28.8 V) | |
| Equalisation charge | 14.7 V (29.4 V) | |
| Set battery type | liquid | |
| Operating conditions | | |
| Ambient temperature | -25 °C ... +50 °C | |
| Fitting and construction | | |
| Terminal (fine / single wire) | 16 mm ² / 25 mm ² - AWG 6 / 4 | |
| Degree of protection | IP 30 | |
| Dimensions (X x Y x Z) | 187 x 97 x 45 mm | |
| Weight | 345 g | |

- Technical data at 25 °C / 77 °F
- adjustable via Steca PA RC100: reconnection voltage, deep discharge protection, end of charge voltage, boost charge voltage, equalisation charge, battery type
- Inverters must not be connected to the load output.