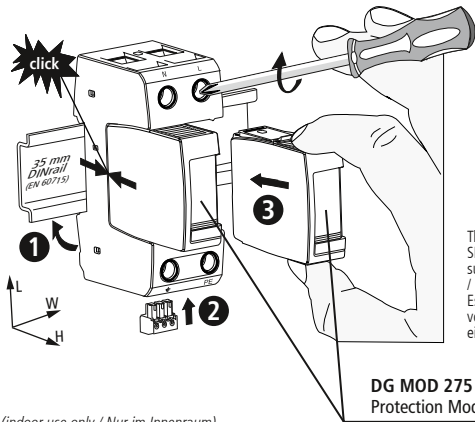




Technical Data / Technische Daten

DEHNguard® modular  
DG M TN 275 NL (FM)

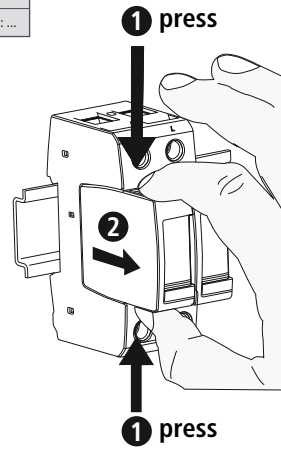
Class II	IEC 61643-11: ...
Type 2	EN 61643-11: ...



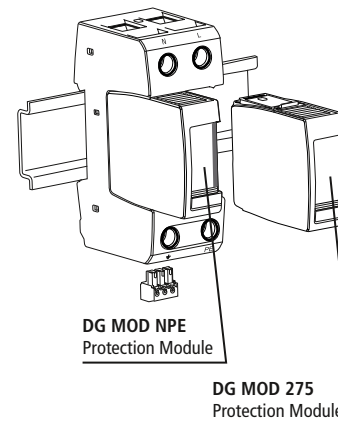
There is no distance from the SPD to any earthed conductive surface required.  
Es ist kein zusätzlicher Abstand vom SPD zu geerdeten Flächen einzuhalten.

DG MOD 275 Protection Module

(indoor use only / Nur im Innenraum)



DG M TT 2P 275 NL (FM)

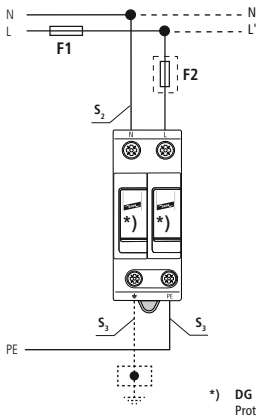


DG MOD NPE Protection Module

DG MOD 275 Protection Module

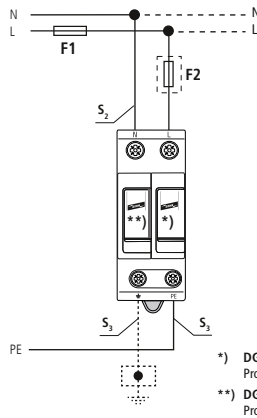
Type	DG M TN 275 NL (FM)	DG M TT 2P 275 NL (FM)
Mode	L - N	N-PE
Protection Module	DG MOD 275	DG MOD NPE
U <sub>c</sub>	275 V~	255 V~
U <sub>N</sub>	230 / 400 V; Tol.: 0V ... U <sub>c</sub>	
f <sub>N</sub>	50 / 60 Hz	
I <sub>SCCR</sub>	50 kA <sub>rms</sub>	---
max. I <sub>sc</sub>	125 A gG	
I <sub>fi</sub>	---	100 A <sub>rms</sub>
I <sub>PE</sub>	< 0.5 mA	< 5 μA
I <sub>max</sub>	40 kA (8/20)	
ϑ	- 40°C ... + 80°C	
humidity / Feuchte	5% ... 95%	
Ports	1	
IP Code	IP 20 (built in / eingebaut)	
L x W x H	90 mm x 36 mm x 73 mm	

TN (-C) -S DG M TN 275 NL (FM)



\*) DG MOD 275 Protection Module

TT DG M TT 2P 275 NL (FM)



\*) DG MOD 275 Protection Module  
\*\*) DG MOD NPE Protection Module

Backup fuse / Vorsicherung

DEHNguard® modular  
DG M TN 275 NL (FM),  
DG M TT 2P 275 NL (FM)

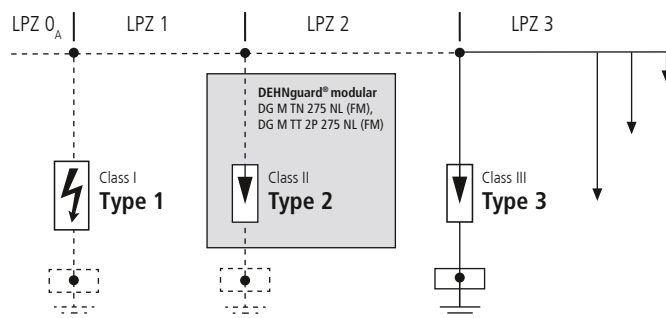
F1	F1 ≤ 125 A gG ↓ F2
F2	F1 > 125 A gG ↓ F2 ≤ 125 A gG

Fuse F1 A gG	S <sub>2</sub> / mm <sup>2</sup>	S <sub>3</sub> / mm <sup>2</sup>	Fuse F2 A gG
25	2.5	6	---
35	4	6	---
40	4	6	---
50	6	6	---
63	10	10	---
80	10	10	---
100	16	16	---
125	16	16	---
>125	16	16	125

	12 mm	12 mm	12 mm
min. □ L, N, PE(N), ↓	1.5 mm <sup>2</sup>		
max. □ L, N, PE(N), ↓	25 mm <sup>2</sup>	35 mm <sup>2</sup>	
□ ⚠	16 mm <sup>2</sup> Cu <i>10000</i> <i>f</i> ≥ 15.5 mm		

Coordination / Koordination

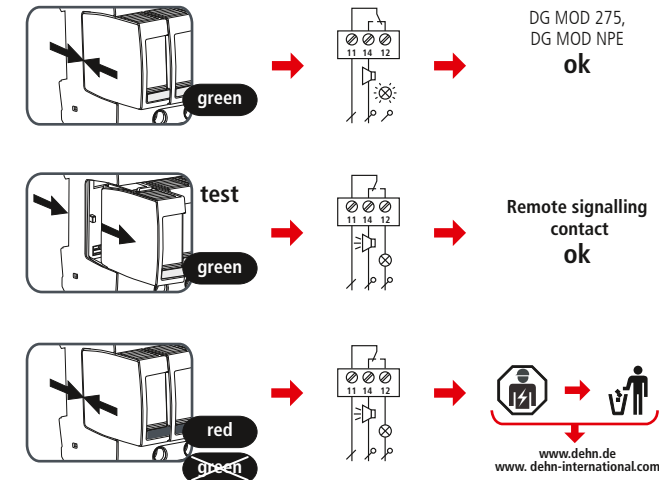
DIN VDE 0185-305-4: ...  
IEC 62305-4: ...



Remote signalling contact / Fernmeldekontakt

DEHNguard® modular DG M TN 275 NL FM, DG M TT 2P 275 NL FM	
	U <sub>N</sub> / I <sub>N</sub>
	AC: 250 V / 0.5 A
	DC: 250 V / 0.1 A
	125 V / 0.2 A
	75 V / 0.5 A
max. 1.5 mm <sup>2</sup>	

Fault indication / Defektanzeige



www.dehn.de  
www.dehn-international.com

