

dooxie™

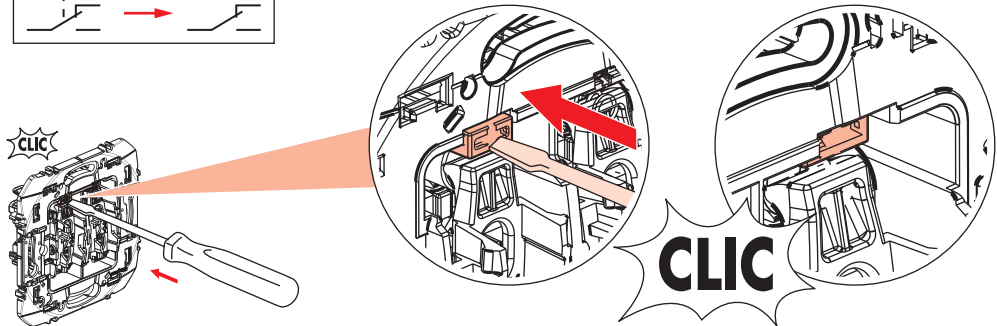
6 000 31 - 6 001 31 - 6 007 30 - 6 007 31



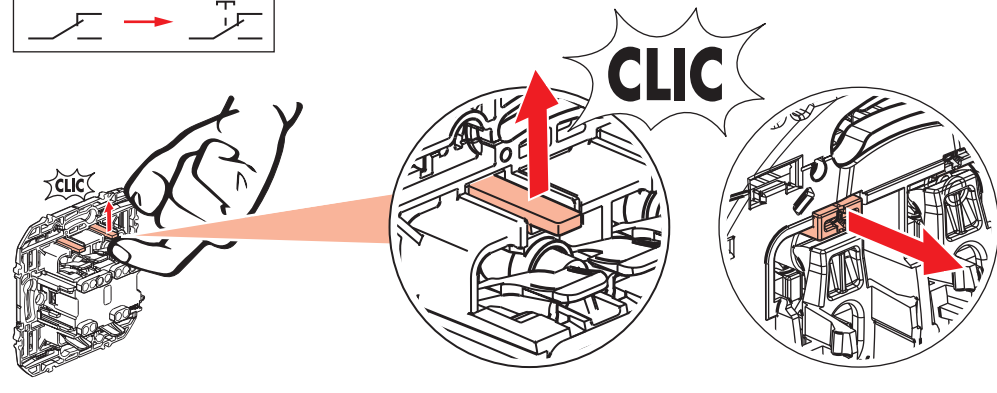
Transformeur réversible (livré en poussoir)					
			-10°C ... +70°C	-5°C ... +40°C	 12 mm 2,5 mm² max.
6 000 31 6 001 31	x 2 6 007 30	6 007 31	250 V~ 10 AX	250 V~ 6 A	

Etape 1 : choix de la commande

Passage de poussoir en va-et-vient



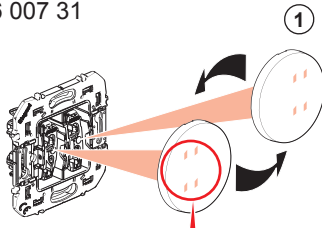
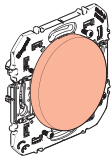
Passage de va-et-vient en poussoir



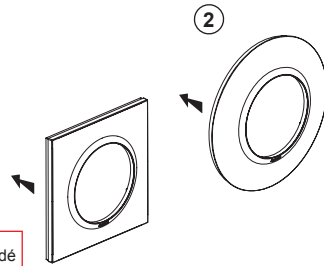
## Etape 2 : montage de l'enjoliveur choisi

6 000 31 - 6 001 31 - 6 007 31

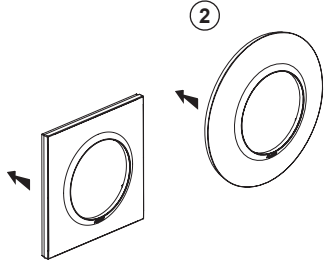
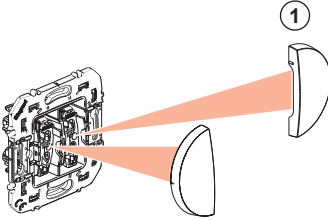
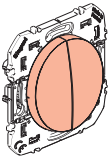
Commande simple



Clipper l'enjoliveur sur le mécanisme commandé

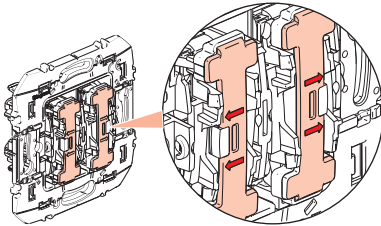
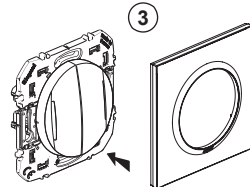
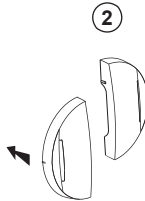
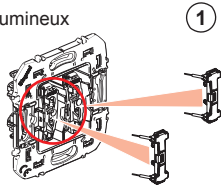
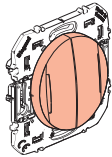


Commande double

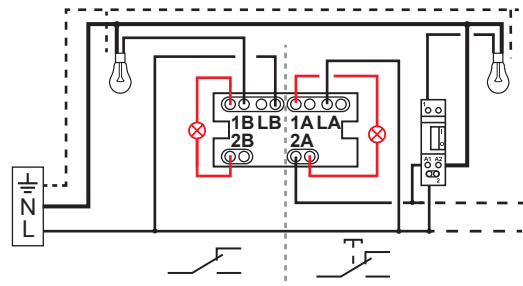


6 007 30

Commande double lumineux



Câblage des voyants en va-et-vient lumineux + poussoir lumineux



Commande doigt lumineux + doigt simple

